



# REPUBLIC OF THE MARSHALL ISLANDS ENVIRONMENTAL PROTECTION AUTHORITY

# RMI EPA ANNUAL REPORT JANUARY- DECEMBER 2024

Prepared For:

**Office of the President  
Cabinet  
Hon. Minister Bremity Lakjohn  
Hon. Members of Nitijela  
RMI EPA Board of Directors**

Prepared By:

**Moriana Phillip**

# MESSAGE FROM THE GENERAL MANAGER

JIMOR WODEJIPEL RA EO BUNWOJ



Our amended strategic plan sets the direction for the organization and is the framework for our programs and activities over the next three years from 2024-2027. The RMI EPA is the agency mandated with protecting our environment and people from negative environmental impacts of development, however, the challenge is great.

In this context, EPA needs to sharply focus on the most pressing environmental challenges, and carefully direct resources to these efforts. This will require closer partnership and collaboration with development partners to ensure that projects are sensitive to the unique environment. It will require commitment, teamwork and additional funding support from the Government and donors.

EPA's response to the Marshall Islands' serious environmental challenges will be to prevent the worst impacts on the environment and people, while building capability over time to address the issues more effectively and proactively.

Our highest priority over the next 18 months will be to update the environmental regulations, permits and operating procedures to modernize the tools we have to work with and ensure they are relevant and able to be implemented.

Other pressing issues are to work with others to find a way to reduce marine pollution from vessels in Majuro lagoon, and developing a program to ensure the safety of household water supplies. We will work to support more sustainable and resilient coastal development through guidance, environmental impact assessments (EIAs) and permit conditions. At the same time, we will work with others to develop innovative responses to challenges such as plastic waste.

On outer islands the impacts are not as pressing compared to the urban centers, so our role will be to participate in activities led by others to assist those islands to develop resource management plans, in order to manage and protect their environment for the long term. There are several activities the EPA currently carries out that we have determined would be better dealt with by other agencies, so we will work over the next 12 months to hand over those responsibilities.

The staff at EPA are committed and passionate about protecting the environment and protecting the health of the people of the Marshall Islands. But it is a hard job. Individual priorities may come before community priorities, sometimes resulting in conflicts. It is the EPA's job to have courage and to stand strong in the face of this and to ensure the quality of the environment for all Marshallese. The EPA will respond to the challenges of working with communities through increased efforts to advise, consult and inform them of the benefits of good environmental management.



**Mariana Phillip**  
GM, RMI EPA



# ORGANIZATION INTRODUCTION

Jimor Woddejippel Ra Eo Bunwoj

## OUR MISSION (THE 4 C'S)

**Courage** – we stand strong for our environment and the health of our families and communities as Marshall Islanders, sometimes in the face of opposition;

**Collaboration** – we work with others to achieve together what we cannot achieve alone;

**Community** – we are part of our community and work with them to develop a culture of environmental stewardship and compliance with the rules; and

**Customer Service** – we work as a team to provide better service to our people.

## FOCUS AREAS

- A. Effective Regulations and Enforcement
- B. Clean, Safe Marine Waters
- C. Safe Fresh Water Supplies
- D. Resilient Coastal Zones
- E. Reduced Risk from Waste and Pollution
- F. A Capable RMI EPA
- G. Capable Communities

## ACTS AND REGULATIONS

- National Environmental Protection Act (NEPA) 1984
- Coast Conservation Act 1988
- Earthmoving Regulations 1989
- Solid Waste Regulations 1989
- Toilet Facilities and Sewage Disposal Regulations 1990
- Marine Water Quality Regulations 1992
- Public Water Supply Regulations 1994
- Environmental Impact Assessment (EIA) Regulations 1994
- Ozone Layer Protections Regulations 2004
- Pesticides and Persistent Organic Pollutants (POPS) Regulations 2004
- Recycling Regulations 2019



# STRATEGIC PLAN **AMENDED 2024-2027**

## 1. **Effective Regulations and Enforcement**

- a. Develop and implement regulations and streamline the permit process for all divisions - note the streamlined Earthmoving permit process.
- b. Implement improved monitoring and enforcement, quarterly key performance indicators identified within each division.
- c. Strengthen education and awareness unit to deliver targeted information on new regulations and modified permit processes.

## 2. **Clean, Safe Marine Waters**

- a. Develop a Terms of Reference for a cross sectoral marine pollution surveillance and response task force. This will provide clarity on roles and responsibilities.
- b. Develop an Oil Spill Response National Plan (NatPlan) that addresses marine pollution from vessels in Majuro.

## 3. **Safe Fresh Water Supplies**

- a. Develop a program to improve household water management through outreach and training with community members.
- b. Strengthen ongoing water testing and monitoring of water quality to enforce quality standards in commercial entities (utilities, water vendors, ice makers, restaurant water, nearshore water, groundwater, etc...).
- c. Continue surveys to inventory and map groundwater resources in the RMI.

## 4. **Resilient Coastal Zones**

- a. Publish Coastal Sustainable Development Policy.
- b. Encourage appropriate development through environmental advice, assessments, and permit conditions.
- c. Support and facilitate the expansion and protection of protected areas from degradation.

## 5. **Reduced Risk from Waste and Pollution**

- a. Reduce hazardous wastes from going into landfills.
- b. Reduce plastic waste from going into landfills by expanding recycling schemes.
- c. Develop a program to address abandoned vehicles and scrap metal.
- d. Improve monitoring of hazardous substances.
- e. Improve processes to conduct regular sanitary surveys at the landfill and the water reservoirs.

## 6. **A Capable RMI EPA**

- a. Improve management and teamwork, develop a network of experts, and improve facilities, systems, and processes.
- b. Regularly train staff on regulatory updates, enforcement methods, and technical expertise.
- c. Review and update a multi-year strategic action plan to provide strategic priorities that are linked to Cabinet Agenda 2030, Sustainable Development Goals (SDGs), National Sustainable Plan (NSP), aligning to Compact Funds identified for the Environment Sector 2024-2044.

## 7. **Capable Communities**

- a. Conduct targeted information campaigns for priority areas.
- b. Support outer island communities to manage their resources and environment.
- c. Secure support from the Government to ensure that environmental issues are elevated in important national as well as global platforms to secure appropriate financial support.



# COASTAL, LAND AND CONSERVATION DIVISION

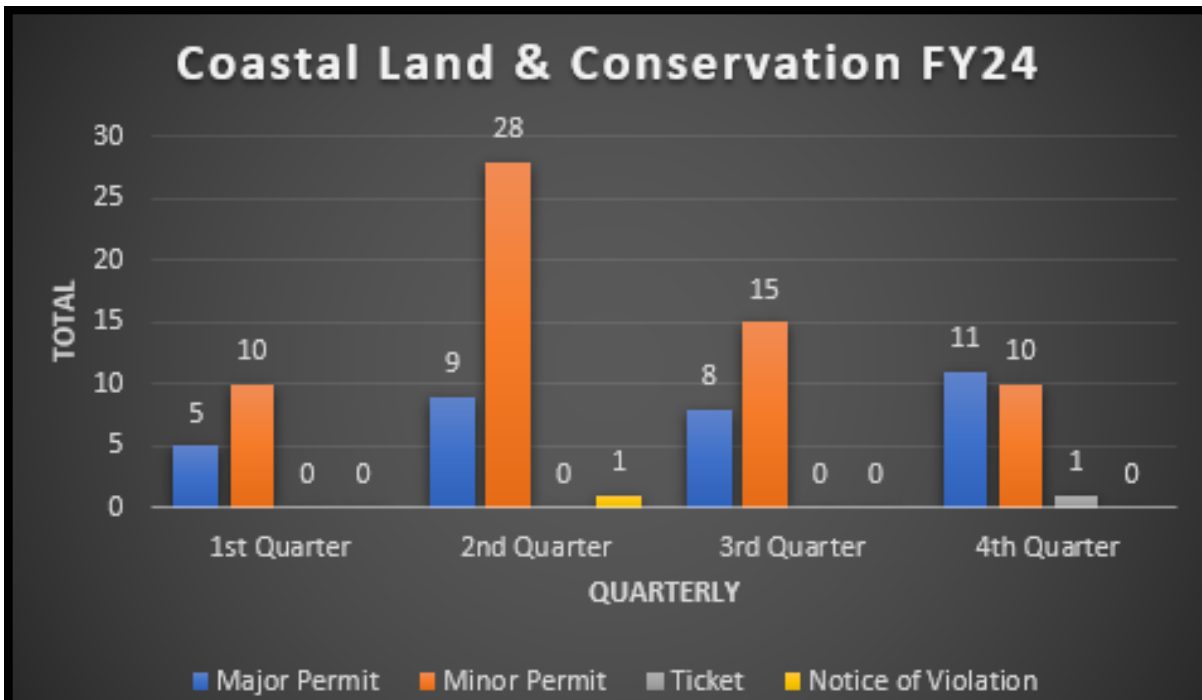
The Coastal Land and Conservation Division has two types of Earthmoving permits: major and minor. Major permits are typically larger commercial or government projects that require a Preliminary Environmental Assessment (PEA) and if needed, an Environmental Impact Assessment (EIA). Minor permits are usually household-level projects such as home construction, sewage and/or saltwater connections, etc. In 2024, the division processed a total of 63 minor permits and 33 major permits. The figures below are some examples of the Major Earthmoving projects.

In addition to the permitting process, the Coastal Land & Conservation Division is tasked with routine coastal shoreline monitoring and analysis. Coastal monitoring is essential for addressing environmental, economic, and societal challenges in coastal regions. It plays a critical role in tracking climate change impacts, preserving biodiversity, and ensuring water quality, while also protecting infrastructure, supporting industries like fisheries and tourism, and providing early warnings for natural disasters. By detecting risks and enabling data-driven decision-making, coastal monitoring safeguards ecosystems, reduces long-term economic costs, and enhances community resilience. As a proactive investment, it ensures sustainable development and promotes the well-being of both coastal populations and the broader environment.

## MAJOR EARTHMOVING PERMITTED PROJECTS

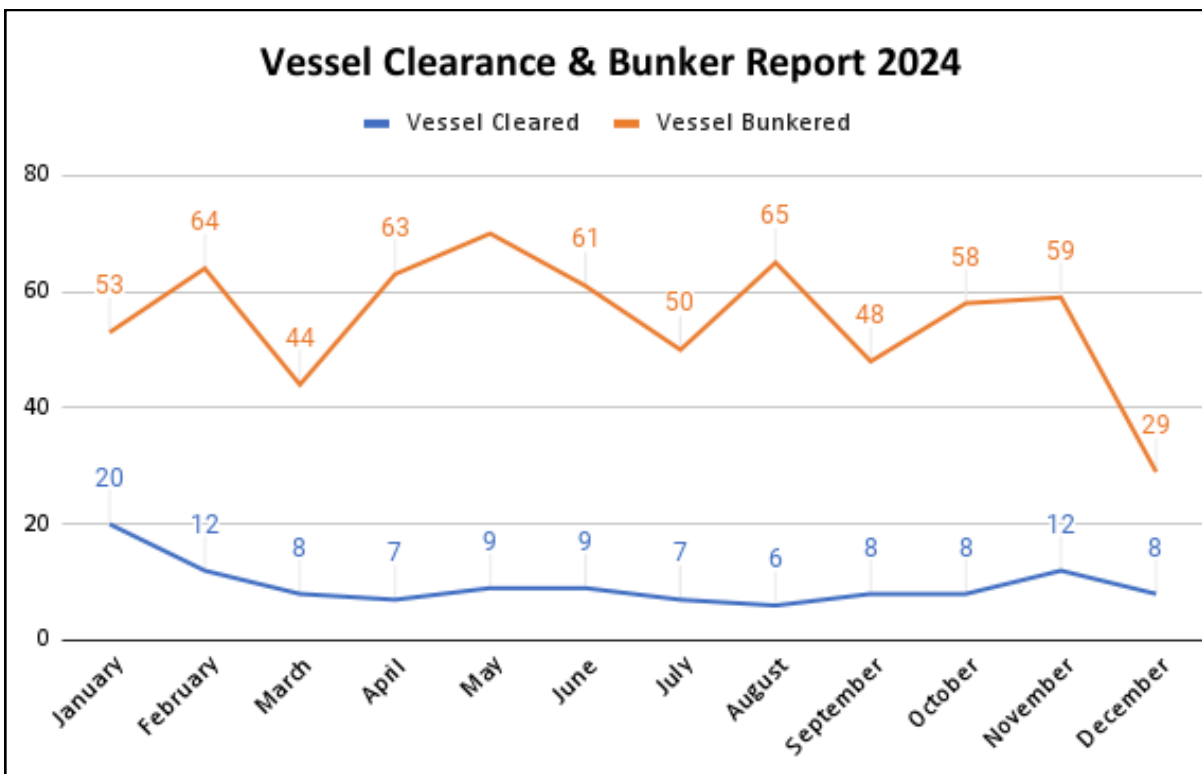


# PERMITTING AND COMPLIANCE MONITORING



## METHODS OF MONITORING

- Ensuring compliance with Earthmoving and Environmental Impact Assessment Regulations
- Conducting Preliminary Environmental Assessment
- Permitting
- Issuing Tickets and Notice of Violations



# WATER QUALITY MONITORING AND LABORATORY

## LABORATORY AND TECHNICIAN CERTIFICATION

The Water Quality Division completed its lab audit during the first week of September 2024, marking a significant milestone in ensuring high standards of water testing and monitoring. As part of this achievement, lab technicians passed their on-site evaluations and earned Analyst Certifications. Laboratory Supervisor Tuvuki Ketedromo, along with Paul Paul and Richardo Jarom, attained Level III Analyst certifications. Meanwhile, Malolo Malolo (Ebeye DGM), Vonerik Boktok, and Handel Dribo (both from Ebeye) were certified as Level II analysts. Additionally, Nicky Komanta of MWSC became certified as a Level I analyst for drinking water. Notably, this audit was the first to include MWSC's participation.



## WATER QUALITY MONITORING

The Water Quality Laboratory is certified to conduct bacterial contamination analysis for both drinking and marine water using advanced Colilert and Enterolert methods. Division technicians play a crucial role in safeguarding public health by routinely monitoring key water sources, including ice producers, water dispensers, food and beverage establishments (such as restaurants, cafes, and mom-and-pop shops), city water taps, hospital taps, and coastal waters. These regular checks ensure that water quality standards are upheld across diverse environments. The results are provided to the public through our Facebook page and the local newspaper.

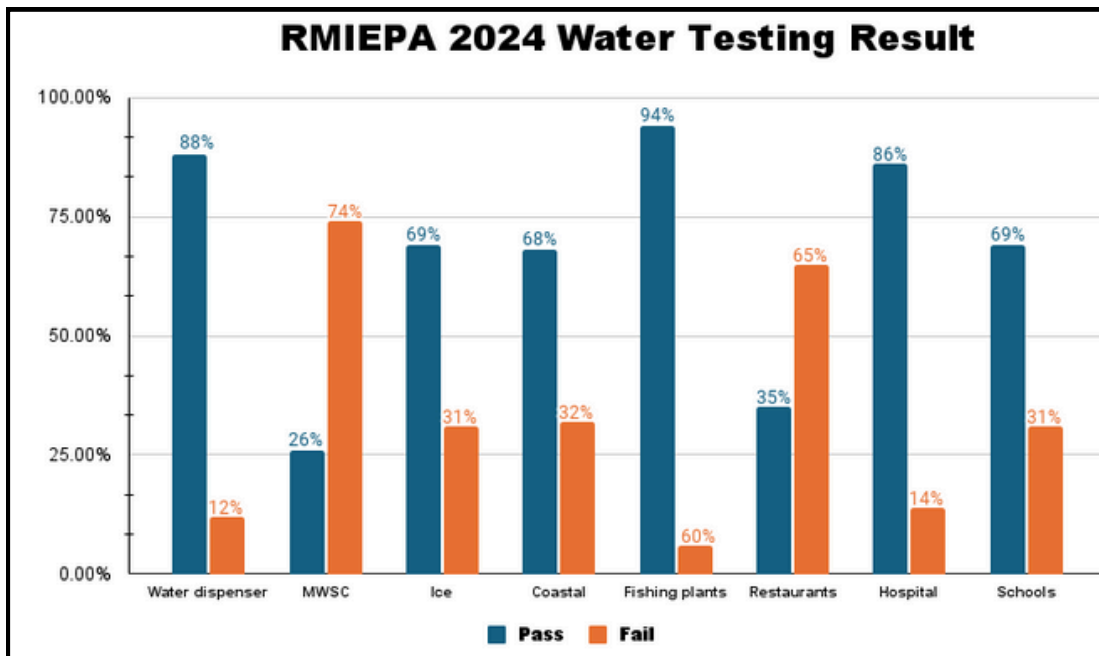
Certification as a water quality technician is a critical credential, reflecting the expertise and proficiency required to conduct accurate water quality testing and monitoring. It plays a vital role in safeguarding public health by preventing waterborne illnesses and preserving the health of aquatic ecosystems.



# WATER QUALITY MONITORING AND LABORATORY

## METHODS OF WATER QUALITY MONITORING

1. **Water Dispensers:** Establishments include AD Korean, Do It Best, MH20, EZ Price, Payless, CMI Physical Plant and Pacific Pure Water.
2. **MWSC:** Treatment Plant A, Treatment Plant C, and Majuro Hospital RO systems.
3. **Ice Producers:** Permitted Establishments include D&M Store, Home Garden, Formosa, Payless, Elite Engineering, J&M Store, Z Brother, K&K, and Weiwei Store.
4. **Majuro Coastal Waters:** Monitoring of fecal contamination of coastal sites from Rita to Laura.
5. **Restaurants:** Major restaurants and food vendors around Majuro.
6. **Schools:** Public and Private schools.
7. **Majuro Hospital:** Water sources in all hospital wards.
8. **Fish Companies:** Pan Pacific Foods and Marshall Islands Fishing Venture.



## NEARSHORE SENSOR Monitoring Partnership with Pacloos - UH Manoa

Key Parameters:

- Temperature: Impacts aquatic health, dissolved oxygen, and coral bleaching.
- Salinity: Signals freshwater runoff and pollution sources.
- Turbidity: Measures water clarity, linked to runoff, erosion, or sewage spills.
- Chlorophyll: Indicates nutrient levels and water quality.
- Sensor Depth: Tracks tidal changes affecting turbidity.

This data helps identify early pollution risks from stormwater, sewage, and erosion.



# SOLID WASTE AND POLLUTANTS DIVISION



Monitoring waste management is essential for collecting data, identifying problems, improving waste reduction strategies, and ensuring regulatory compliance. Proper monitoring also contributes to sustainability by reducing the island's environmental footprint, protecting global ecosystems, and raising public awareness of waste reduction.

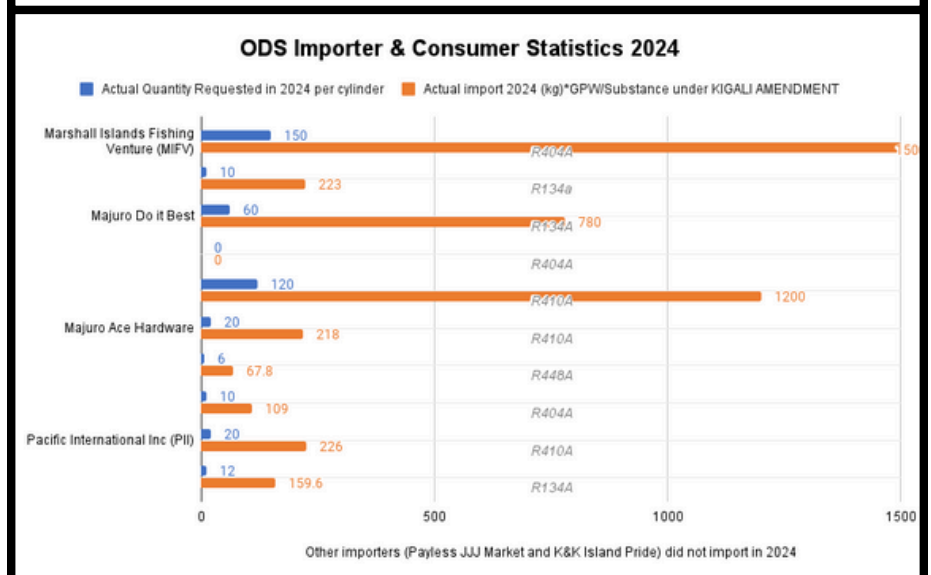
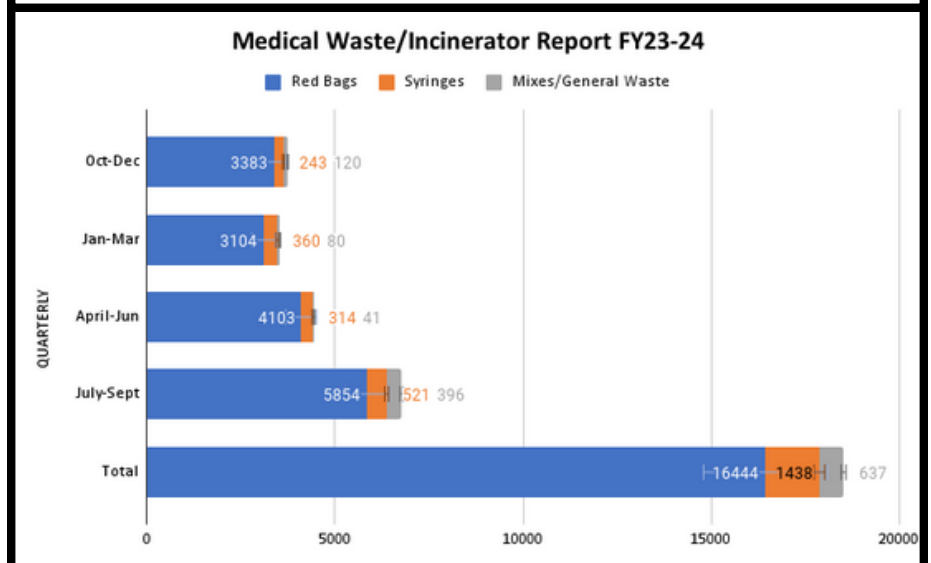
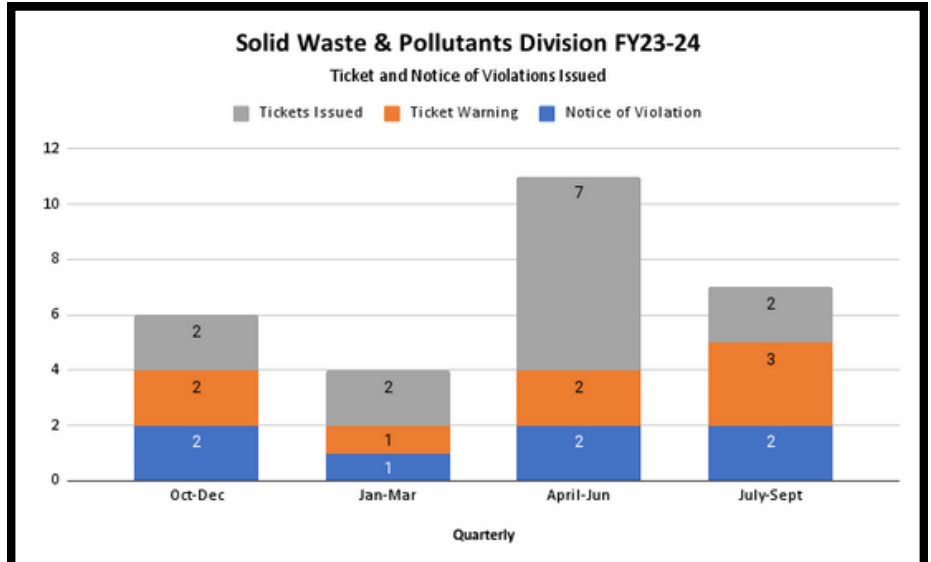
The Solid Waste and Pollutants Division (SWPD) is responsible for overseeing and regulating a diverse range of waste streams and pollutants to ensure environmental sustainability and public health. Its scope of work includes managing both permitted and illegal landfills, monitoring incinerators, and addressing hazardous waste such as hospital by-products and used batteries. Additionally, the SWPD regulates sewage outfalls, mitigates oil and diesel spills, and oversees the control of persistent organic pollutants (POPs) and ozone-depleting substances to comply with international environmental standards. Currently, the division is in the process of drafting amendments to the Container Deposit Legislation and is nearing the completion of the National Oil Spill Response Plan.



# SOLID WASTE AND POLLUTANTS DIVISION

## METHODS OF SOLID WASTE AND POLLUTANTS MONITORING

- Compliance:** Ensuring compliance with Solid Waste Regulations; Toilet Facilities and Sewage Disposal Regulations, Pesticides and Persistent Organic Pollutants (POPS) Regulations.
- Medical Waste Incineration Report:** The chart shows quarterly totals of 16,444 red bags, 1,438 syringes, and 637 mixed/general waste units. This data is critical for EPA monitoring to ensure compliance with waste management regulations, assess the efficiency of incineration practices, and identify trends to improve medical waste disposal and minimize environmental impact.
- Ozone Depleting Substances (ODS) Import & 2025 Forecast:** Analyzes ODS such as HFC imports. EPA-issued quotas show a shift towards sustainable refrigerants. Projected 2025 imports are expected to stabilize with steady demand for R134A, R410A, and others. Efforts continue to reduce CO2-equivalent emissions under the Kigali Amendment.



# CONTAINER DEPOSIT LEGISLATION (CDL) PROGRAM

## What is the Next BIG Thing?

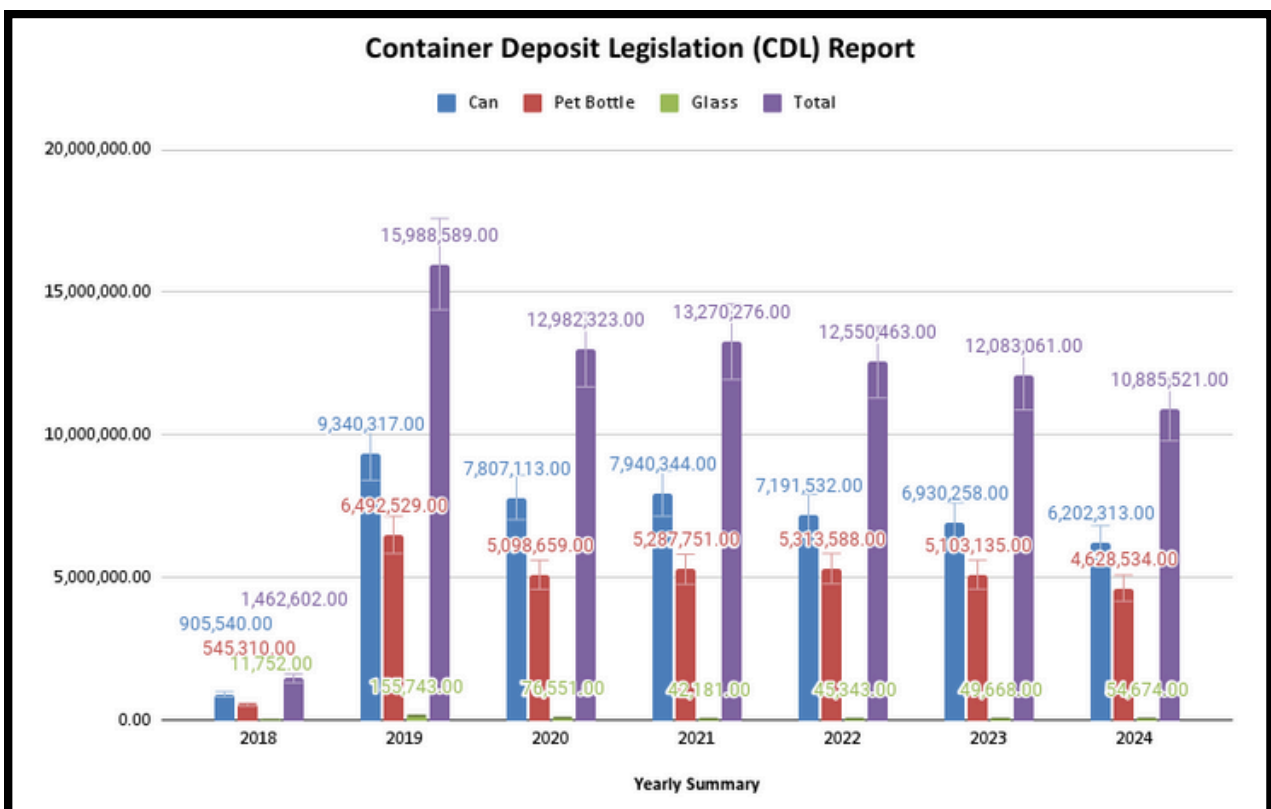
The RMI EPA is prioritizing the expansion of the Container Deposition Legislation, commonly referred to as the recycling program, to include more critical waste streams:

- End-of-life vehicles (ELVs) - Vehicles no longer usable, dismantled for parts, and recycled to prevent hazardous waste pollution.
- White goods - Large appliances (e.g., fridges, washers) recycled for metal; proper disposal prevents chemical leaks.
- Used oil - Contaminated oil requiring recycling to avoid soil and water pollution.
- Used tires - Improper disposal risks fires and environmental damage.

This initiative will be launched as the Product Stewardship Program. It will follow a model similar to the CDL, offering incentives for best practices that guarantee proper waste management and ensuring waste is properly sent to landfills instead of ending up as litter.

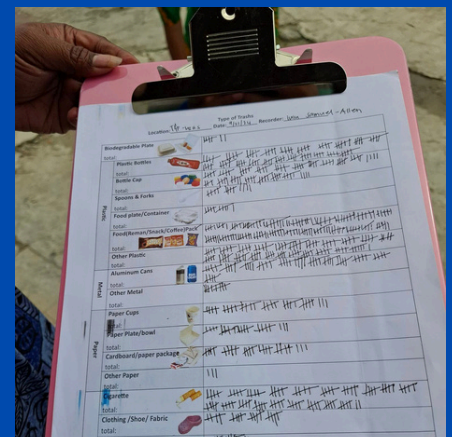
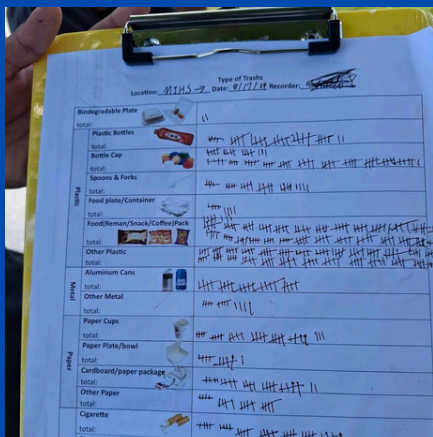
## CDL DATA REPORTING in Collaboration with MAWC

Since its inception in 2018 to the current year 2024, recycling trends in the Marshall Islands show strong contributions from cans and PET bottles but consistently low glass recycling, highlighting a need for improved infrastructure. Total recycling peaked in 2019 at 15,988,589 units but has since declined slightly, emphasizing the need to boost public participation and address challenges to enhance waste reduction efforts.



# JIMOR WODREIPEL COMMUNITY CLEAN-UP INITIATIVE

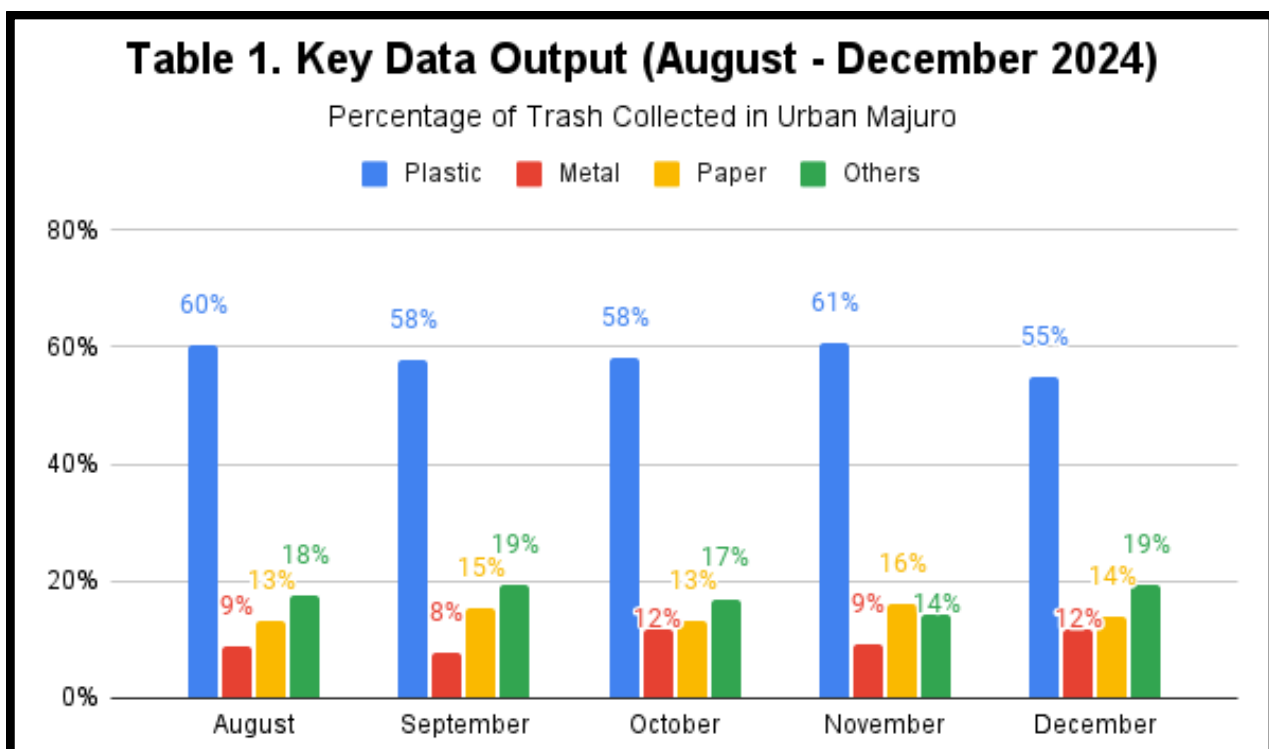
The Jimor Wodejipel Community Clean-up Initiative was originally launched in preparation for the 2024 Micronesesian Games and has since evolved into an ongoing effort to promote and revitalize community clean-up activities on Majuro and Ebeye. Since its inception in June 2024, clean-ups have been conducted bi-weekly, occurring every other Saturday. The RMI Environmental Protection Authority (EPA) extends its gratitude to the generous sponsors who have supported this initiative, including the Ports Authority, Air Marshall Islands, the ROC Taiwan Embassy, the Marshall Islands Development Bank, the National Telecommunications Authority, and the RMI Ministry of Finance.



# JIMOR WODREIPEL COMMUNITY CLEAN-UP INITIATIVE

## KEY ACCOMPLISHMENTS

- 1. Extensive Coverage:** The cleanup encompassed various crucial areas in the central urban DUD and airport areas including public spaces, bridge, beaches, roads, parks, and schools.
- 2. Quantitative Data:** A substantial amount of waste was collected and disposed, totaling 351 trash bags since data collection started in August.
- 3. Community Mobilization:** 18 groups actively participated, demonstrating a strong sense of community engagement and environmental consciousness in church, family, school, sports, and private groups.
- 4. Enhanced Public Spaces:** The cleanup efforts significantly improved the aesthetic appeal, health, and functionality of public spaces.
- 5. Environmental Awareness:** The initiative raised awareness amongst the diverse range of participants about the importance of waste management and pollution reduction.
- 6. Collaborative Partnerships:** Successful collaboration among government agencies, private organizations, and donors strengthened the impact of the cleanup.



Highlights: An average of 45 trash bags and an average of 4,178 pieces of trash were collected per cleanup. High volume of plastic waste (plastic bottles, bottle caps, plastic utensils, food containers, food packs, and other plastics) was identified.





# INTERNATIONAL ENVIRONMENTAL POLICY COORDINATION

In today's interconnected world, environmental challenges such as climate change, biodiversity loss, and pollution transcend national borders. These issues do not respect political boundaries, and their impacts are felt globally, from rising sea levels threatening coastal communities to declining biodiversity undermining ecosystems vital for life. Addressing these challenges requires a united effort, and multilateral environmental agreements (MEAs) provide the essential framework for countries to collaborate effectively.

MEAs provide valuable resources, including financial aid, technical support, and platforms for knowledge sharing. This is particularly critical for developing nations, which may lack the resources to address environmental challenges independently. For instance, mechanisms such as the Green Climate Fund, established under the United Nations Framework Convention on Climate Change (UNFCCC), provide funding for climate adaptation and mitigation projects in vulnerable countries. Additionally, participation in MEAs opens doors to global networks of experts and institutions, fostering innovation and capacity-building.

## MULTILATERAL ENVIRONMENTAL AGREEMENTS (MEAS)

Ramsar Convention on Wetlands

Minimata Convention on Mercury

Convention on Biological Diversity (CBD)

Cartegena Protocol on Biosafety to the Convention on Biological Diversity

Vienna Convention for the Protection of the Ozone Layer

Montreal Protocol on substances that deplete the Ozone Layer

Kigali Amendment to the Montreal Protocol on Substances that Deplete the Ozone Layer

Amendment to the Montreal Protocol on Ozone depletion

Amendment to the Montreal Protocol on Substances that Deplete the Ozone Layer adopted by the Ninth Meeting of the Parties

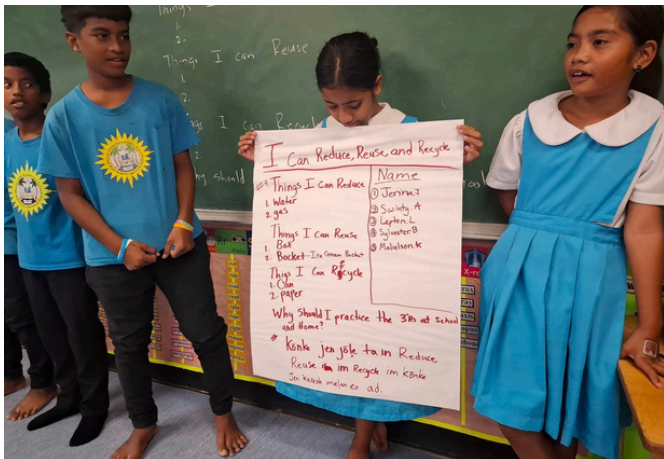
Basel Convention on the Control of Transboundary Movements of Hazardous Wastes and their Disposal

Stockholm Convention on Persistent Organic Pollutants (POPs)

Rotterdam Convention on the Prior Informed Consent Procedure for Certain Hazardous Chemicals and Pesticides in International Trade



# EDUCATION AND AWARENESS DIVISION



Awareness is a critical tool for shaping outcomes, enhancing decision-making capabilities, and fostering confidence. In alignment with these principles, the RMI Environmental Protection Authority (EPA) continues to implement its educational outreach program, which is designed to achieve multiple objectives. One of its primary goals is to instill positive environmental behaviors in the next generation.

The Education and Awareness Division (EAD) outreach program focuses on comprehensive discussions about effective waste, water and coastal management practices. These discussions are usually supplemented by a detailed PowerPoint presentation to ensure clear communication of the key messages.

The outreach program extends beyond schools, with the EAD engaging with local communities, churches, and responding to requests from organizations such as MALGov. Additionally, the program utilizes platforms like the V7AB radio station and its Facebook page to reach a broader audience.



# ADDRESSING CLIMATE VULNERABILITY IN THE WATER SECTOR (ACWA PROJECT)

## MODULAR TANK INSTALLATION PROGRESS ON EXISTING COMMUNITY BUILDINGS



UNITED NATIONS DEVELOPMENT PROGRAMME

### KEY ACTIVITIES

1. Water Security - Improving household and community rainwater harvesting and storage structures in 115 communities at 24 outer islands and atolls for 13,778 beneficiaries (6,751 F, 7,027 M).
2. Water Resilience - Protecting 609 groundwater (GW) wells from contamination.
3. Water Governance - Strengthening the technical capacities of national and subnational institutions and key stakeholders by developing drought contingency plans.

#### MODULAR TANK INSTALLATION PROGRESS ON EXISTING COMMUNITY BUILDINGS



COMMUNITY VOLUNTEERS AT WORKS IN MEJATTO (RONGELAP), KWAJALEIN:



UNITED NATIONS DEVELOPMENT PROGRAMME

#### MODULAR TANK INSTALLATION PROGRESS ON EXISTING COMMUNITY BUILDINGS



COMMUNITY VOLUNTEERS AT WORKS IN NAMU:



UNITED NATIONS DEVELOPMENT PROGRAMME



# ADDRESSING CLIMATE VULNERABILITY IN THE WATER SECTOR (ACWA PROJECT)

## KEY ACCOMPLISHMENTS

- Number of Flatpack modular tanks completed and installed: 64 tanks across 7 Atolls and Island (Rongrong, Enebu, Carlos, Santo, Mejatto, Ebadon, Majkin, Namu, Loen, Mae, Lib, Lae, Ujae, Wocho).
- Total Volume of Modular Tanks so far: 135,000 Gallons (= 511 m<sup>3</sup>)
- Total Number of beneficiaries accessing safe water: 791 people
- Total Number of community workers trained in the installation of modular tanks: 398 people (247 M, 61 F, 76 youth, 14 elderly)
- National Drought Contingency Plan endorsed by the RMI Cabinet

## MODULAR TANK INSTALLATION PROGRESS ON EXISTING COMMUNITY BUILDINGS



### COMMUNITY VOLUNTEERS AT WORKS IN EBADON, KWAJALEIN:



## MODULAR TANK INSTALLATION PROGRESS ON EXISTING COMMUNITY BUILDINGS



### COMMUNITY VOLUNTEERS AT WORKS IN LIB:



# MANAGING COASTAL AQUIFERS IN SELECTED PACIFIC SIDS (MCA PROJECT)

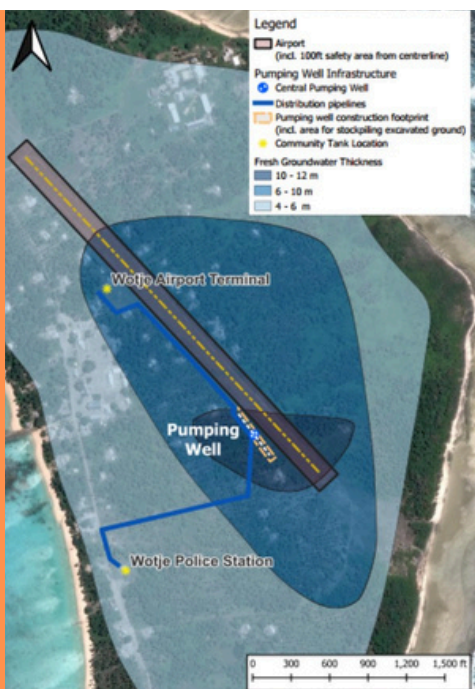


## KEY ACTIVITIES

1. Identifying the extent, threats, and development potential of fresh groundwater resources.
2. Increasing awareness of groundwater as a water security supply source.
3. Providing options for improved access to groundwater.
4. Improving groundwater protection and management, within Pacific Small Island Developing States.



## WOTJE ATOLL GROUNDWATER INFILTRATION GALLERY



### Site activities

1. Gallery construction – materials shipment and storage, engagement of contractors
2. Drought supply operation and management
3. Capacity development of community-based monitoring
4. Drilling new monitoring bores – Laura & Wotje



Wotje	
Total population	859
Total households	132
<b>Main source of drinking water (% of households)</b>	
Rain catchment	100
Bottled water	0
Reticulated water outside household	0
Reticulated water inside household	0
Well water	0
Other	0
<b>Type of toilet facility (% of households)</b>	
Flush toilet connected to central sewage system	0
Flush toilet connected to own septic tank	52.3
Water sealed (without flush)	29.5
Pit latrine	14.4
None	0
Other	3.8



# MANAGING COASTAL AQUIFERS IN SELECTED PACIFIC SIDS (MCA PROJECT)

## KEY ACCOMPLISHMENTS

1. Drilling rig training and monitoring bore construction involving both EPA and MWSC staff. Drilling consultant from Thailand ran the training with support from SPC in-country technical specialist.
2. Community-based monitoring program: training and roll out with community water committees.
3. Groundwater assessments in Aelonlaplap, Jaluit, Wotje, and Majuro.
4. Endorsement for Wotje Groundwater Infiltration Gallery, stakeholder engagement for construction and coordination, and shipment of construction materials underway.



### Setup is key

- Four days to setup/prepare site and equipment.
- Equipment to prepare included:
  - Drilling mud tank setup – extra fittings needed to be sourced to slow down flow through tank.
  - Drilling mud circulation/delivery to mud tank – suited to height of drilling rig.
  - Water supply plumbing from pump to portable tanks – rapid pumping required.
  - PVC well screen to be cut to design.
  - Mud pit, pre-casing hole (1<sup>st</sup> 1 m) had to all be hand dug (gravel and sand rubble fill) – time consuming, not easy digging.
- Extra fittings and materials not included in the initial supply of rig/material shipment – difficult to anticipate all these extra bits needed.



### Drilling

- Objective to drill as deep as possible and install a multi-level monitoring well in the one drilled hole.
- Drilled 14m in 2 hours.
- Collected geological samples at 1m depth intervals.
- Whole drilling operation required 5,000L of water/drilling mud to complete the drilling.
- Drilling mud performance is key to keep the drilled hole open. Key part of the training – requires building experience.

## Monitoring well installation

- Previous geophysics survey identified freshwater lens in Delap (at drill location) was very thin, only 1-2m thick.
- Installed 1<sup>st</sup> level (deep) @ 5.5m depth.
- installed 2<sup>nd</sup> level (shallow) @ 2.5m depth.
- 1<sup>st</sup> level well salinity = 20.5 mS/cm



# WATER SCARCITY PROJECT

## SCHOOL DRINKING STATIONS

### PROJECT SUMMARY

There is a total of 6 water stations at 6 different schools on Majuro (Rairok Rainbow Elementary, Long Island Elementary, North Delap Elementary, Majuro Cooperative School, Assumption, and Rita Elementary School). Each water station is equipped with a 4,500-gallon storage capacity and can supply filtered water at a rate of approximately 8 gallons per minute. Most stations feature 16 taps, though North Delap School has 12 taps due to space constraints. To accommodate younger students, each station includes a lower-level basin with 4 taps placed at a convenient height. The design of these stations aims to provide around 0.5 gallons of water per student per day under typical conditions. When planning the system, key factors considered included 50 years of historical rainfall data for Majuro, roof area, catchment and tank size, school enrollment numbers, and the typical school week (Monday to Friday).



*Compact water filtration system installed in a secure outdoor enclosure, featuring multiple filtration stages and a hose reel for convenient access.*



### THREE-TIER WATER TREATMENT

Each station incorporates a three-tier water treatment process: a first-flush system to remove debris and dirty water from the roof and gutters, a three-step microfilter to eliminate fine suspended dirt, and a UV lamp filter to kill bacteria and viruses. These stations are not licensed to supply water to the general public, except in cases of drought. During extended droughts, the stations can accept trucked water from the Majuro Water and Sewer Company (MWSC) for treatment and, with guidance from the National Disaster Management Office (NDMO), may serve as community drought relief stations. The Environmental Protection Authority (EPA) will include the stations in routine water quality monitoring, focusing on bacteria testing (E. coli and total coliforms). As a pilot project, only a limited number of schools have received these stations, and their performance will be monitored by the RMI EPA, with input from schools and the Public School System (PSS). The data gathered will help advocate for the expansion of these stations to more schools in the future.



# WATER SCARCITY PROJECT

## SCHOOL DRINKING STATIONS



# REGULATORY OVERSIGHT

## U.S. KWAJALEIN ATOLL MILITARY INSTALLATION

### USAKA Environmental Standards (UES)

The purpose of the USAKA Environmental Standards is to ensure that environmental issues arising on the US Military Installation are dealt with in a fair and timely manner.

The Compact of the Free Association between the Republic of the Marshall Islands and the United States of America declare that it is the policy of the two nations to ‘promote efforts to prevent or eliminate damage to the environment and biosphere and to enrich understanding of natural resources of the Marshall Islands’ (Title 1, Article VI, Section 161).

Section 161 delineates a framework for development of environmental standards and procedures of U.S actions at USAKA that reflects the particular environment of Kwajalein and the “special government relationship” between the two nations cited by the Compact.

RMI EPA has joint regulatory responsibilities with US Agencies; NFWS, US Army Corps of Engineer, US EPA, SMDC and others to ensure compliance with the USAKA Environmental Standards.



### JOINT COMMITTEE MEETING (JCM)

RMI EPA attended High Level Joint Committee Meeting. The two-day Joint Committee Meeting (JCM) was held in Honolulu on April 17-18, 2024. This meeting underscores the ongoing partnership and mutual commitment to national security, international partnership, and environmental stewardship in the Pacific region.

RMI EPA attended the Working Level Joint Committee Meeting. The full day Joint Committee Meeting (JCM) was held in Majuro, October 13th, 2024. This meeting underscores the ongoing partnership and mutual commitment to national security, international partnership, and environmental stewardship in the Pacific region.

### JOINT COMMITTEE MEETING (JEMFAC)

RMI EPA attended the inaugural JEMFAC Committee Meeting. The Republic of the Marshall Islands and United States bilateral Joint Economic Management and Financial Accountability Committee or JEMFAC took place in Honolulu, on September 6th, 2024. The committee members jointly discussed the reporting obligations and the implementation of the Annual Implementation Plan (AIP) appropriating funds in the sectors of health, education, environment, and public infrastructure as identified under the Compact of Free Association, as amended.





# MORE ABOUT US

For the latest updates and more information, we invite you to follow our Facebook page: RMI Environmental Protection Authority. Stay connected and informed by joining our online community!



Phone

**692-625-3035/3205**



Email

**[morianaphillip.rmiepa@gmail.com](mailto:morianaphillip.rmiepa@gmail.com)**



Facebook

**[RMI Environmental Protection Authority](#)**



HQ Office Address

**[PO Box 1322 Delap Rd.](#)**